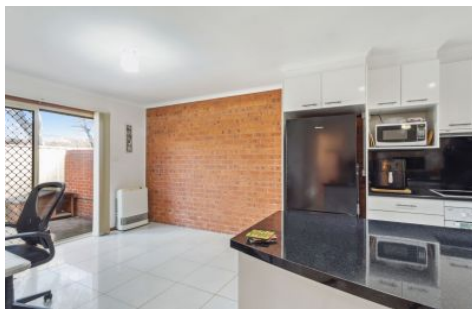


# Ian McNamee & Partners



## 1/21 Elm Way Jerrabomberra NSW

2 1 2

Rates: \$2,506.16 per annum (approx.)  
Strata: \$745.41 per quarter (approx.)  
Rent: \$550 per week

**Price** : \$579,000 - \$599,000

**View** : <https://www.mcnamee.com.au/sale/nsw/capital-monaro-snowy/jerrabomberra/residential/townhouse/8056024>

Looking for the perfect blend of comfort and convenience in Jerrabomberra? Look no further than this appealing single-level townhouse now on the market. Boasting two spacious bedrooms complete with built-in robes, this property offers ample storage for all your needs.

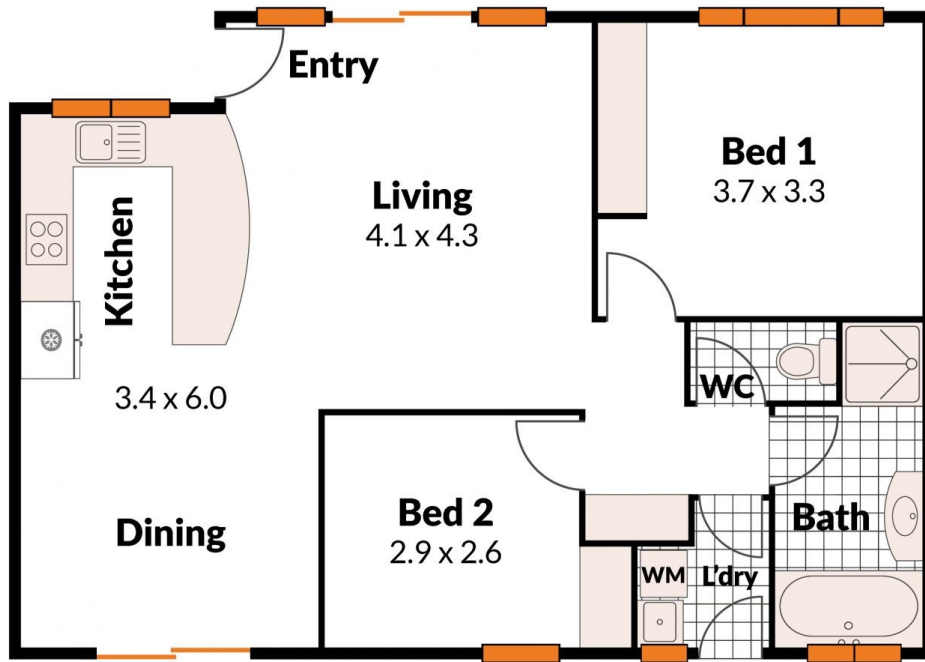
Step inside to discover open-plan tiled living areas, enhanced with underfloor heating for cozy winters. The well-appointed kitchen features a large breakfast bar and electric cooking.

Outside, enjoy the privacy of not one, but two paved courtyards - ideal for entertaining or simply soaking up the sunshine. With one allocated carport and an additional car space, parking will never be an issue.



**Michael Edwards**  
6283 5555

1/21 Elm Way, Jerrabomberra, NSW 2619



2 1 2

Ian McNamee & Partners<sup>PTY LTD</sup>  
your local agent

DISCLAIMER: Plans are artist's impressions only and are intended as an approximate guide only. Plans may not be drawn to scale.